

## Derby Theatre – Our Visual Journey

Derby Theatre is in the Derbion Shopping Centre at 15 Theatre Walk, St Peter's Quarter, Derby DE1 2NF.



### Arriving at Derby Theatre



Inside Derbion Shopping Centre, Derby Theatre is located on the 1st level opposite the Eagle Market.

The main entrance to the Theatre looks like this.

**WELCOME!**

If you arrive this way you will walk through the sliding doors and into the building.

# DERBY THEATRE

Once inside, you will find our Box Office.

Say HELLO!



This is where you can book and collect tickets for the show. Our staff will be happy to help you.

It is best to arrive early for the show to have enough time to collect tickets, go to the toilet, use the lift and get settled into your seat before the show starts.



Don't be late!

Our foyer area gets very busy during show times so you can expect there to be lots of people around. It may also be a bit noisy.

Keep it down..



## DERBY THEATRE

There is a café in the foyer where you can buy hot and cold drinks and a range of delicious snacks.

yummy!



The toilets are situated around to the left of the café counter. This is where you can also find the lift down to the car park.

If you are looking for changing facilities the Derbion Shopping Centre offers facilities at any near by toilets.



When you gotta go..

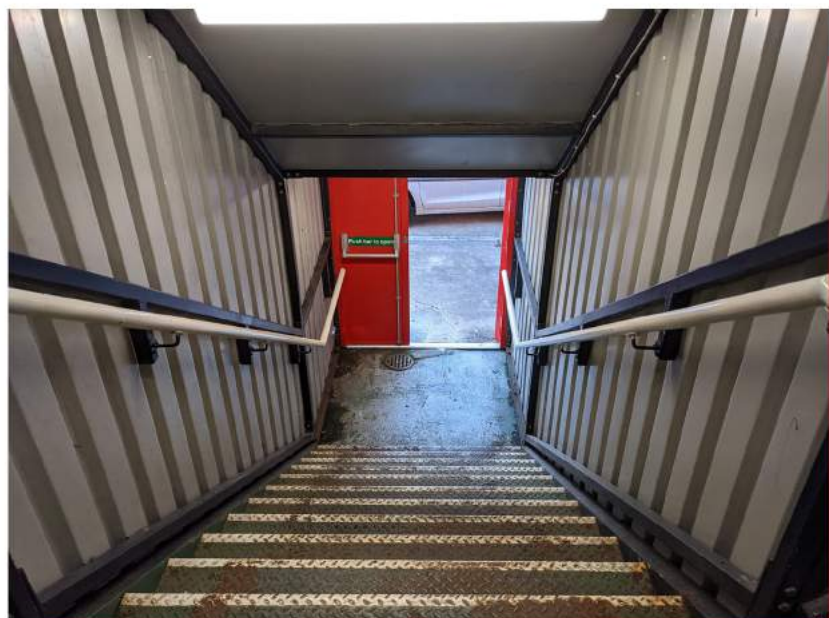
## The route to the studio

Below is the area where you will wait until ten minutes before the show starts. Our ushers will then meet you and take you down to the studio.



This is the route you will take down to the studio and our ushers will be with you to show you the way.

Mind your step.

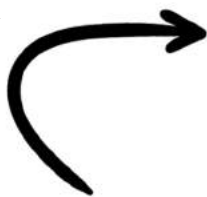


# DERBY THEATRE

You may have seen our building when you arrived, but you will walk past this area on your journey to the studio.



Knock, Knock!



This is the entrance to the studio, which there will toilets on the other side.

On your ticket you will find your seat number and this is where you will be sitting. Our attendants will help you find your seat.

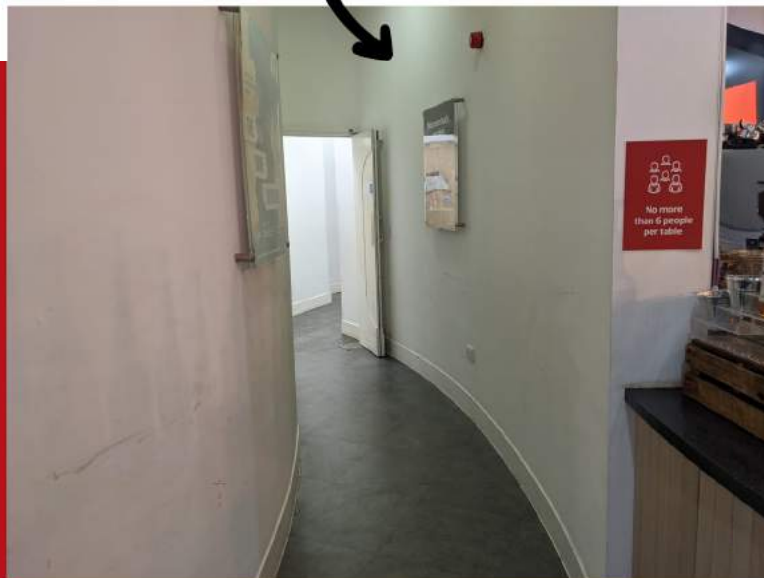
You will walk past the stage area and unless you are on the front row, you will then climb a few steps up to your seat.

Before the show the studio will be busy and probably quite noisy as people are finding where to sit and getting ready for the start of the show.

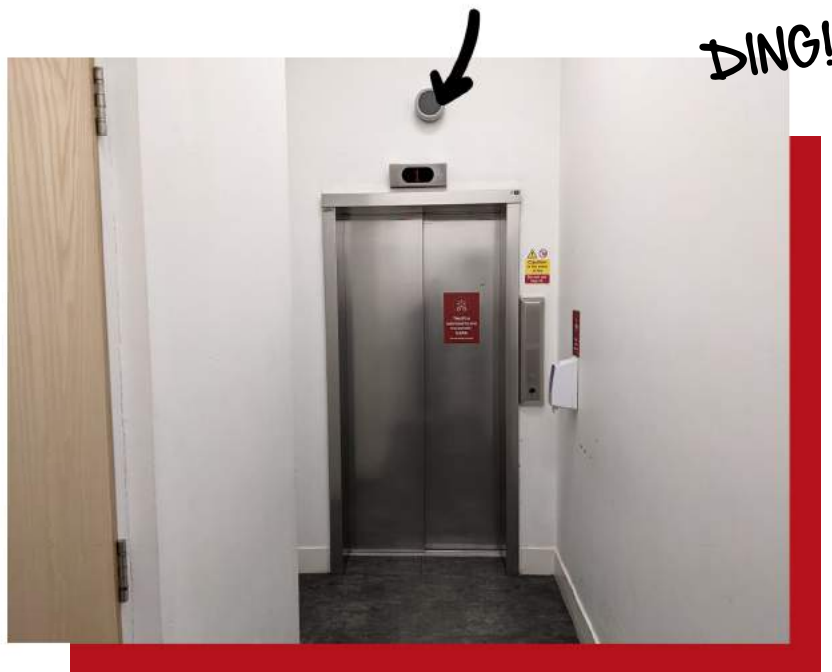
*If you need to go out of the studio during the performance an usher will be able to help you.*

**Accessible route to the studio:**

Follow the corridor round the side of the café.  
This is where you will find the lift.



Call the lift by pressing the button to the righthand side and  
step inside.



Accessible route to the studio:

When in the lift, press the button that display the number '0'.



This will then take you to the downstairs car park in the  
Derbion Shopping Centre.

Spooky..



Once you have exit the lift, you will need to head towards this sign which leads you to the studio door.

*Follow me..*



*Shh!*

### **Quiet areas**

There will be a quiet area if you need to take some time in a quieter place and this will be in our Rehearsal Room. An usher will be happy to take you to this area.

### **Mobile phones and Photos**

Before the show starts, please make sure you have turned off your mobile phone and please don't take any photos during the show.

*If you need any help during your visit or have any questions about the performance that you have seen, please don't hesitate to ask a steward or one of our reception team.*